

VENTA®
BY BÜCHLIN DESIGN

2017/2018

"We have invested all of our energy into making our furniture as functional as possible, but with such elegant designs that this is not immediately obvious."

Karl Büchin, General Manager Büchin Design, Berlin





index of content

active tables	10
buffet tables	48
table+stool	64
lectern	76
features	80
equipment	84
material+color	94
references	106



VENTA in Dubai / JW Marriott Marquis

Büchin Design develops, builds and sells individual furniture for the hotel industry and events catering business under the brand name „VENTA by Büchin Design“.

The high-quality buffet furniture includes exclusive cocktail tables and stylish buffet tables as well as matching modern stools. Most VENTA furnishings can be folded up or stacked together to save space, and can be assembled and disassembled in just a few easy steps, without the need for any tools.

All of our buffet furniture is mobile and can be used anywhere. It meets the high demands of the hotel, events and catering industry in every respect.

Our VENTA products have an exclusive design and are available worldwide.

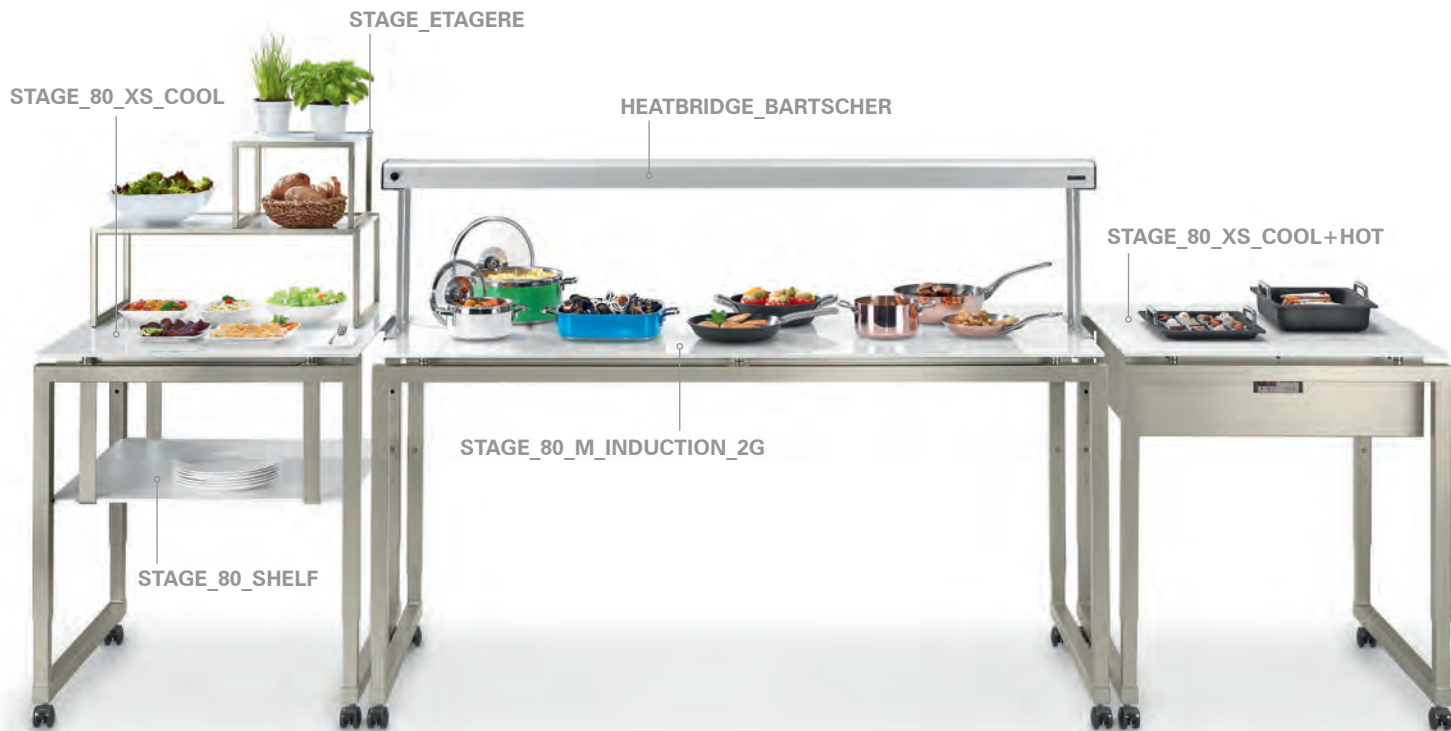
Most of our VENTA products are manufactured in Germany, and we are pleased to appear with the “Made in Germany” seal at trade fairs both in Germany and abroad.

ACTION

buffet tables with integrated devices



ALPOWER
LEAVING CHANGES
SCAN ME
FOR MORE INFORMATION



STAGE – the intelligent buffet system

Büchin Design developed an elegant buffet furniture range for the high demands of the hotel industry and for exclusive events. It is equipped with a range of technical features to keep dishes hot or cold.

We offer exclusive buffet tables with integrated devices, which are installed below the table-top and are almost invisible. The need for a clean and clear table surface is not affected by this functionality.

Our VENTA buffet tables are meticulously designed, down to the smallest detail. They have an elegant and high-quality design, but also have a level of flexibility and functionality that allows them to meet the diverse requirements of the hotel, events and catering industry. The buffet tables can be assembled and disassembled in just a few simple steps and without the need for any tools. Thanks to the sophisticated trolley system, the buffet tables can be transported and stored in even the smallest spaces.

In addition to their functionality, the emphasis is also on the exclusive and elegant design of our VENTA buffet tables. We have applied a modern design to our exclusive buffet furniture, giving it a stylish and high-quality appearance, and concealing how flexible, versatile and practical it is.

INDUCTION

multiple point – more than one pot per field





Item No.: 80049101303

The new highlight of our furniture range is the STAGE_80_M_INDUCTION_2G buffet table with integrated surface induction.

You can place three to four pots on the four induction hobs and set the temperature for each hob individually.

Table with four integrated induction fields to keep the food warm on a buffet. Each induction field can run individually. You can adjust four different levels (40°-90°C). The first level corresponds to approximately 40°C, depending on the used pot. On each induction field (measures: 34 x 34 cm) you can place several pots to keep them warm.

This technology was developed by the Swiss company GASTROS and is marketed under the brand name InductWarm Series 130. Büchin Design is the only company who offers this technology integrated in its mobile buffet tables.



Item No.: 80049101401
table-top: compact panel, white



Item No.: 80049101307
table-top: glass, black



Item No.: 80049101402
table-top: compact panel, ceramic anthracite



Item No.: 80049101303

The advantage of the new induction-table is that two different materials for the table-top are available. You can choose the table-top in glass (underside colored) or in the new material „compact panel“.

„compact panel“/definition: compact laminates have a multilayer structure and consist of melamine resin impregnated decorative paper and multiple layers of soda kraft paper impregnated with phenolic resins, which are laminated under high pressure and heat.



basic:
table-top: 401, 402
option
table-top: 303, 307, 407, 409, 411, 414, 415, 416, 417, 418, 419

Item No.: 80049100402

[LxWxH]: 1800 x 800 x 840 mm
height adjustable: 920, 1000, 1080 mm
weight: 88,5 kg (with glass-top)
weight: 75 kg (with compact panel)

Base

steel, powder-coated anthracite
profile 40 x 40 mm, on wheels with
height compensation
weight: 17 kg

Table-top

1790 x 790 x 10 mm,
weight: 35 kg (glass-top)
weight: 20,8 kg (compact panel)

Metal housing

metal plate, 1,5 mm, powder-coated
weight: 6,9 kg

Induction (4 devices)

induction system: InductWarm
manufacturer: Gastros AG Switzerland
model: InductWarm 130
measures: (L x W x H) 35 x 35 x 11 cm
weight: 5,3 kg
voltage range: 220-240V AC
maximum power input: 750 W
electrical fuse protection: 10 A
frequency: 50 Hz

perfect system to
keep the food warm
(no cooking)



MATERIAL+COLOR

basic

base: 100,101,102
table-top: 401, 402

option

base: 103, 104, 105, 109
table-top: 303, 307, 407, 409, 411, 414, 415, 416, 417, 418, 419

Table also available in smaller depth of 50 cm:

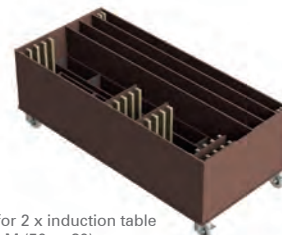
STAGE_50_XS_INDUCTION_2G
and STAGE_50_M_INDUCTION_2G



explosion view



item-no.: 99066



trolley for 2 x induction table
STAGE_M (50 or 80)

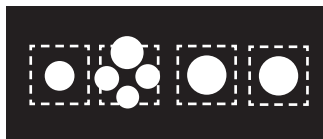
Benefits

STAGE_80_XS_INDUCTION_2G



Item No.: 80040101402

four fields to place chafing dishes and/or pots
four fields with different temperature options



top-view/example: positioning of the pots



surface/black glass-top

The ON/OFF button and the PUSH button are on the front of the metal housing under the table-top.

The InductWarm 130 is equipped with a four-level temperature control. The different temperature levels (40 - 90°C) can be controlled by key functions.

The first level corresponds to approximately 40°C.

Item No.: 80049100307

invisible built-in:
4 x InductWarm 130 device



IMPORTANT !

The usage of the **SILICONE MAT** is mandatory.

It saves the surface of the table-top in case of overheating and avoids the movement of the pot from the induction field.



positions of the buttons under the table



4 x button
ON/OFF



4 x PUSH button to
adjust the heating

COOL+HOT

cool or hot – as you desire – in one table





Item No.: 80063101401

The new **STAGE_80_XS_BAIN-MARIE_COOL+HOT** buffet table with a stainless steel tube houses a cold-hot plate.

This technology was developed by Höller, one of a small number of companies worldwide who offer this technology in small and convenient units. This cold-hot plate enables you to keep dishes cool at temperatures as low as -5°C or to switch on the heating function. A hot plate keeps dishes warm. This has the added benefit that you do not have to use induction-compatible cookware, but can also use porcelain cookware, for example.

The buffet table has an area of 80 x 80 cm, while the integrated hob measures GN 2/1 (i.e. 66 x 53 cm). Power is supplied via a standard power cable (230 V). Heavy current is not required.

The equipment runs very quietly and energy-efficiently.



Item No.: 80063101401 (different types of use)

Item No.: 80063100402

[LxWxH]: 800 x 800 x 760 mm
(ad. height: 840, 920, 1000 mm)
weight: 71,6 kg

Base

steel, powder-coated anthracite
profile 40 x 40 mm, on wheels
with height compensation,
weight: 13,6 kg

Table-Top

compact panel, 10 mm,
790 x 790 mm,
decor: ceramic anthracite
weight: 3,9 kg

Inlay

compact panel, 10 mm,
ceramic anthracite
weight: 2,6 kg (each inlay)

COOL+HOT-unit

size: 2/1 GN (660 x 530 mm)
stainless steel (inside)
metal housing (outside)
powder-coated
weight: 48,9 kg

COOL or HOT
combined in one table

The HOT-mode keeps the
food warm, **no cooking!**



height can be
adjusted
(76 - 100 cm)

MATERIAL+COLOR

basic

base: 100, 101, 102
table-top: 401, 402

option

base: 103, 104, 105, 109
table-top: 407, 409, 411, 414, 415, 416, 417, 418, 419

2 x GN (1/1)



left side closed with chafing dish lid/right side
closed with inlay



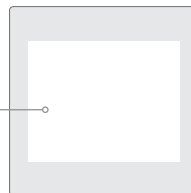
table surface closed with two inlays



Benefits

-5°C / +110°C
temperature range

SIZE: 2/1 GN
660 x 530 mm
Depth: 120 mm



Multifunctional well Hot-Cold (2/1 GN)
measures: 770 x 630 x 250 mm



features: multifunctional well Hot-Cold with two inlays, Bain-Marie: adjustable from 30°C up to 110°C/static cooling: up to -5°C, max. ambient temperature 25°C, CW unit: GN 2/1, 230V, heat output: 1800 Watt, coolant: R600a, cooling output: 140 Watt



touch panel on the front of the table





Item No.: 80006101401303

Another technical gem is our STAGE_80_XS_COOL+HOT buffet table with a glass surface, which houses a cold-hot plate.

This technology was developed by Höller, one of a small number of companies worldwide who offer this technology in small and convenient units. This cold-hot plate enables you to keep dishes cool at temperatures as low as -5°C or to switch on the heating function. A hot plate keeps dishes warm. This has the added benefit that you do not have to use induction-compatible cookware, but can also use porcelain cookware, for example.

The buffet table has an area of 80 x 80 cm, while the integrated hob measures GN 2/1 (i.e. 66 x 53 cm). Power is supplied via a standard power cable (230 V). Heavy current is not required.

The equipment runs very quietly and energy-efficiently.

Item No.: 80006100402307

[LxWxH]: 800 x 800 x 760 mm
(ad. height: 840, 920, 1000 mm)
weight: 60 kg

Base

steel, powder-coated anthracite
profile 40 x 40 mm, on wheels
with height compensation,
weight: 18 kg

Table-Top

compact plate 10 mm, 790 x 790 mm,
decor: ceramic anthracite
weight: 4 kg

Cover

metal box, 1,5 mm,
powder-coated anthracite
weight: 12 kg

COOL+HOT-unit

size: 2/1 GN (660 x 530 mm)
glass-top, black colored (307)
or white colored (303)
weight: 26 kg

COOL or HOT
combined in one table

The HOT-mode keeps the
food warm, **no cooking!**



height can be
adjusted
(76 - 100 cm)

MATERIAL+COLOR

basic

base: 100,101,102
table-top: 401, 402

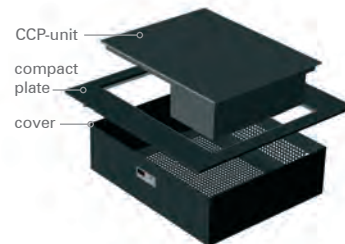
option

base: 103, 104, 105, 109
table-top: 407, 409, 411, 414, 415, 416, 417, 418, 419

connection between table-top and base



explosion view/main parts



dismantling the cover for service



Benefits

-3°C / +120°C
temperature range

SIZE: 2/1 GN
660 x 530 mm



table on wheels

CCP (comfort-combi-plate) 2/1 GN
measures: 660 x 530 mm



height:
190 mm

technical details:

CCP built-in system, 2/1 GN, size: 660 x 530 mm,
height: 190 mm, power supply: 230V, heat output:
1400W, coolant: R600a, cooling output: 140W



touch panel on the front of the table



COOL

cooling – without plug





Item No.: 80007101303

Our exclusive STAGE_80_XS_COOL table with integrated cold plates works without the need for any power cables.

You place this table anywhere in the room – no need for power sockets.

Before use, the cold plates must be stored in the freezer room of the hotel or event location for around twelve hours at -18°C. Then the COOL table can be used for approximately five hours.

The temperature of the table surface is approx. 5°C. The table is designed for indoor use with an ambient temperature of approx. 21°C.

Outdoor use with higher temperatures is not possible.

Item No.: 80007100303

[LxWxH]: 800 x 800 x 760 mm
(ad. height: 840, 920, 1000 mm)
weight: 46,7 kg

Base

steel, powder-coated anthracite
profile 40 x 40 mm, with height
compensation, weight: 13,6 kg

Table-top

safety glass 10 mm, 790 x 790 mm,
weight: 15 kg
underside white colored

Bowl (for COOL-plates)

metal plate, 1,5 mm, powder-coated
anthracite
weight: 8,5 kg

Individual

other colors on request

5h cooling
5°-10°C
on the table surface
without electricity



height can be
adjusted
(76 - 100 cm)

MATERIAL+COLOR

basic

base: 100,101,102
table-top: 303, 307

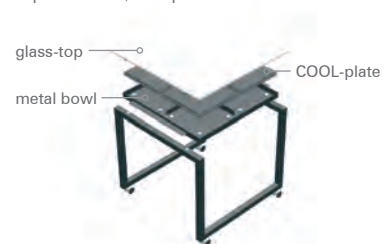
option

base: 103, 104, 105, 109
table-top: 308, 309, 310, 311, 319

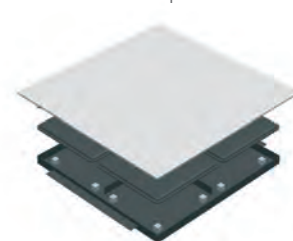
connection between table-top and base



explosion view/main parts

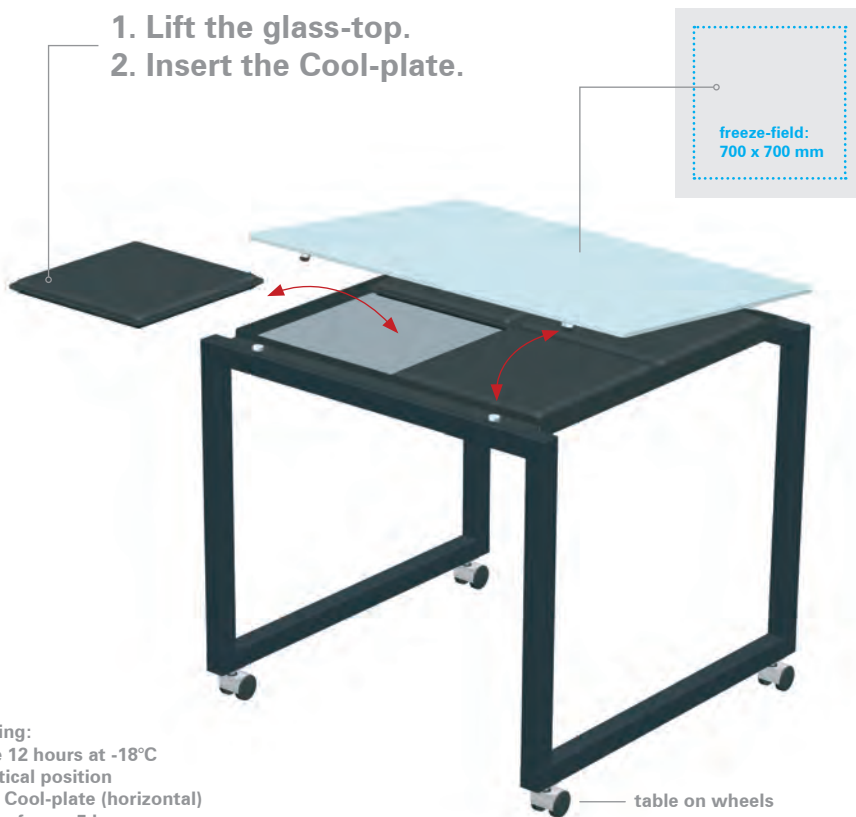


metal bowl with 4 x COOL-plate



Benefits

1. Lift the glass-top.
2. Insert the Cool-plate.



handling:
freeze 12 hours at -18°C
in vertical position
insert Cool-plate (horizontal)
usage of max. 5 hours
5-10°C on the table surface

Cool-plate
350 x 350 x 25 mm
weight: 2,4 kg



trolley for 8 x Cool-plate



weight: 15 kg [empty]/30 kg [full]

TEPPAN GRILL

HOT DESK - the hearth of the Third Millennium



STAGE_80_XS_TEPPAN_GRILL

Item No.: 80009100

[LxWxH]: 800 x 800 x 760 mm
(ad. height: 840, 920, 1000 mm)
weight: 40 kg

Base

steel, powder-coated anthracite
profile 40 x 40 mm, on wheels
with height compensation
weight: 18 kg

Table-Top (electrical device)

TEPPAN GRILL by CDS-Design GmbH
(manufacturer)
material: stainless steel, matt abraded
electric: 230V / 50-60Hz / 2200 Watt
weight: 25,8 kg

Individual

other base frame colors on request

perfect system for **cooking**
direct on the table surface



height can be
adjusted
(76 - 100 cm)

MATERIAL+COLOR

basic

base: 100,101,102
table-top: st. steel

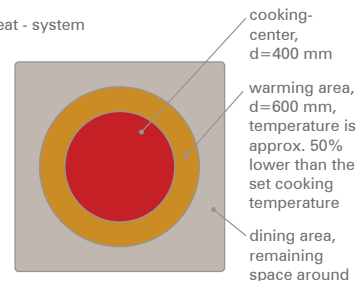
option

base: 103, 104, 105, 109
table-top: stainless steel

connection between table-top and base



heat - system



trolley for max. 4 x STAGE_80_XS_TEPPAN_GRILL



weight: 70 kg [empty] / 230 kg [full]

STAGE_80_XS_TEPPAN_GRILL

recommended combination:

STAGE_80_XS_TEPPAN_GRILL
with cover-plates

STAGE_80_XS
standard model (optional with black
glass-top)



detail view - table-top and base



table-top-unit



temperature dial (1-10)



MOBILE BAR

modular – rollable – flexible





mobile bar system and stools

The mobile bar – a design experience, with an exclusive, modern design, flexibility and versatility.

The established STAGE buffet system from our VENTA Interior range can be converted into a mobile bar. In place of the glass panels already part of all versions, we have added an additional table-top option to our portfolio. The compact panel is a heavy-duty plastic surface.

We use this panel both as a table-top and as a covering, which enables a mobile bar to be created from a STAGE buffet table in an instant. A front panel is attached to the existing metal adapters on the long side. The two side coverings are also attached to the front panels using special connectors and without the need for tools. Then the table-top, which is also formed from the compact panel, is attached to the adapter. Attach the table-top, and the mobile bar is complete!

To make it perfect, you only need one more item of STAGE buffet system furniture. With the STAGE_50_L buffet table as a counter, the mobile bar is ready for use. The STAGE_50_L table-top can consist of a glass panel (particularly appropriate in color form) or a compact panel. There is virtually no limit to the possible combinations. The mobile bar can match the color theme of the room or the event theme.

We offer two standard versions of the mobile bar – the corresponding table frames in standard anthracite and champagne colors and the table panels and coverings in anthracite (ceramic anthracite) and white (premium white).

STAGE_MOBILE_BAR

Item No.: 85001100402402

T_1 [LxWxH]: 1960 x 500 x 1000 mm

T_2 [LxWxH]: 1800 x 800 x 920 mm

total weight: 103,5 kg

Base

steel, powder-coated anthracite
profile 40 x 40 mm, on wheels with
height compensation,

Table_1/weight: 25 kg,

Table_2/weight: 23 kg

Table-top/Side-plates

compact-plate, 10 mm

decor: ceramic anthracite or

premium white

Table_1/weight: 15 kg

Table_2/weight: 53 kg

bar-system

applicable with all
STAGE-Tables

(see page 56-59)

table-top size:
1950 x 490 mm
material options:
compact panel
or glass top



connection between table-top and base



front and side covers on Table_2



item-no.: 99058



trolley for 2 x MOBILE BAR

MATERIAL+COLOR

basic

base: 100,101,102

table-top: 401, 402

cover: 401, 402

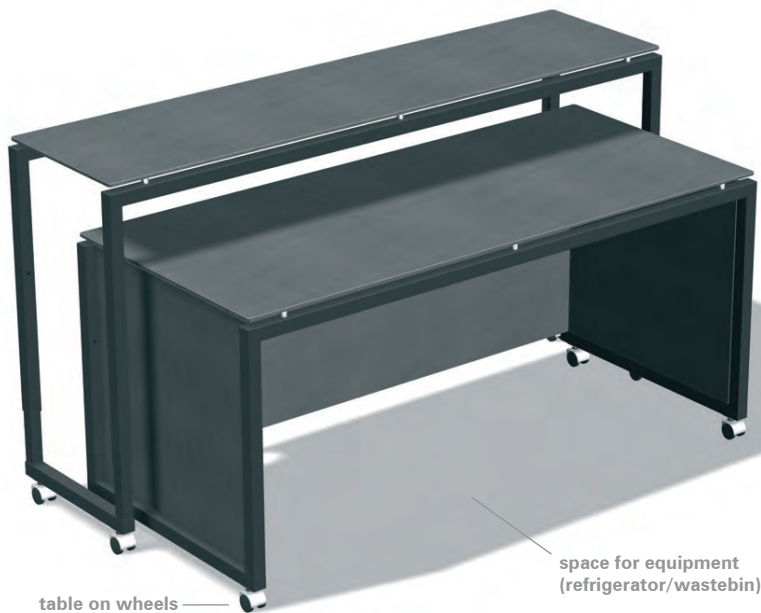
option

base: 103, 104, 105, 109

table-top: 303, 305, 307, 319, 407, 409, 411, 414, 415, 416, 417, 418, 419

cover: 407, 409, 411, 414, 415, 416, 417, 418, 419

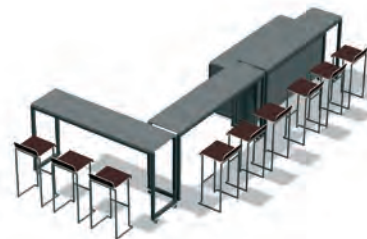
perfect system
to build up a new
application in a few seconds ...



optional equipment/arrangement



optional equipment/arrangement



optional equipment/arrangement



LED-FRAME

illuminate your cocktail table



SET_70_LED

Item No.: 23007100303

[LxWxH]: 700 x 700 x 1050 mm
weight: 20 kg

Base

steel, powder-coated anthracite
profile 30 x 30 mm, can be folded
weight: 7 kg

Table-top

safety glass 10 mm, $\phi = 700$ mm,
white glass-top
to be fixed to the base,
weight: 10 kg

LED-frame

steel, 1 mm, powder-coated
anthracite, white acrylic glass,
weight: 1,5 kg

Individual

other frame colors on request

illuminate your
table in any color

remote control
to adjust the LED-color



MATERIAL+COLOR

basic

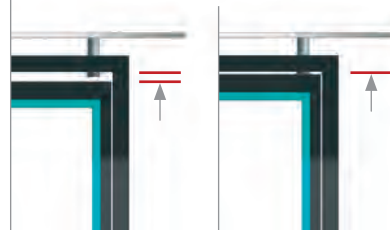
base: 100, 101, 102
table-top: 300, 401, 402

option

base: 103, 104, 105, 109
table-top: 303, 305, 307, 308, 309, 310, 311, 407, 409, 411, 414, 415, 416, 417, 418, 419



connection between table base and LED-frame



mounting of the LED-frame



folding-system of the SET Table



LED_FRAME_SET

66001100

[LxWxH]: 940 x 425 x 30 mm
weight: 5,5 kg

Base

steel, 1 mm, powder-coated
anthracite

Lightframe

white acrylic glass,
30 x 15 mm

electrical parts

input 100-240V, 50/60Hz,
working voltage 12~24V

additional LED-frame
to upgrade your
cocktail-table

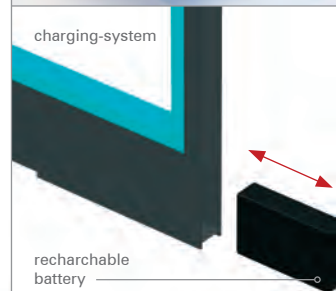


5 hours of
light capacity

remote control
to adjust the LED-color

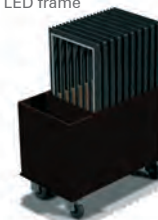


charging-system



rechargeable
battery

trolley for 10 x LED frame



weight: 40 kg [empty]/55 kg [full]

BUFFET





Item No.: 80001101300

Büchin Design develops, builds and sells individual furniture for the hotel industry and events catering business under the brand name „VENTA by Büchin Design“.

The high-quality buffet furniture includes exclusive cocktail tables and stylish buffet tables as well as matching modern stools. Most VENTA furnishings can be folded up or stacked together to save space, and can be assembled and disassembled in just a few easy steps, without the need for any tools.

All of our buffet furniture is mobile and can be used anywhere. It meets the high demands of the hotel, events and catering industry in every respect.

Our VENTA products have an exclusive design and are available worldwide.

Most of our VENTA products are manufactured in Germany, and we are pleased to appear with the “Made in Germany” seal at trade fairs both in Germany and abroad.

STAGE_80 (set of 4)

Item No.: 80001100300

L: 1960 x 800 x 920 mm
M: 1800 x 800 x 840 mm
2 x XS: 800 x 800 x 760 mm
total weight: 187 kg

Base

steel, powder-coated anthracite
profile 40 x 40 mm, with height
compensation
weight: 25 kg, 23 kg, 2 x 18 kg

Table-top

safety glass 10 mm,
weight: 38 kg, 35 kg, 2 x 15 kg

height adjustable-system

L: 920, 1000, 1080, 1160 mm
M: 840, 920, 1000, 1080 mm
XS: 760, 840, 920, 1000 mm

Individual

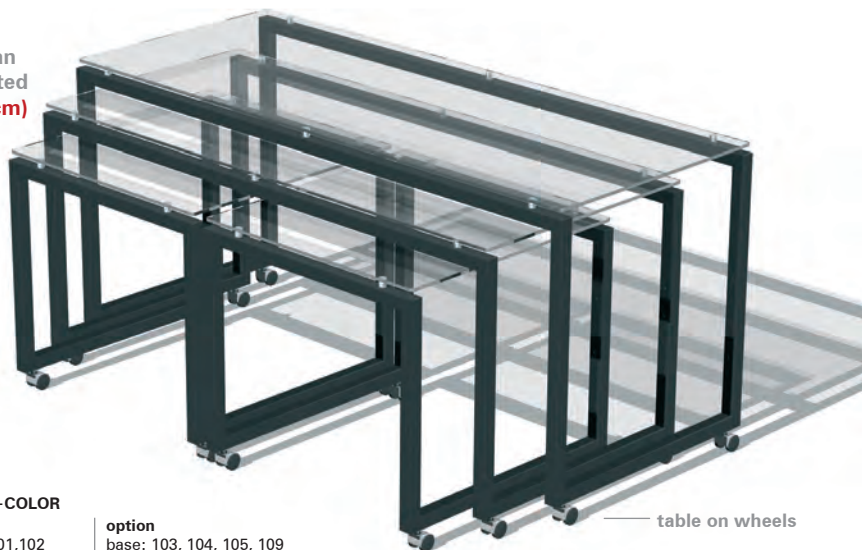
other colors on request



STAGE_50

Buffet table is also
available in **50 cm** width.

height can
be adjusted
(76-116 cm)



MATERIAL+COLOR

basic

base: 100,101,102
table-top: 300, 401, 402

option

base: 103, 104, 105, 109
table-top: 303, 305, 307, 308, 309, 310, 311, 407, 409, 411, 414, 415, 416, 417, 418, 419

— table on wheels

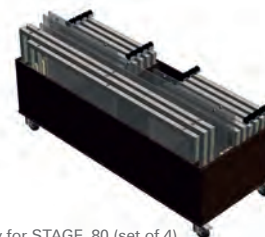
connection between table-top and base



arrangement of the four Buffet tables



item-no.: 99065



trolley for STAGE_80 (set of 4)

SHELF_STAGE

Item No.: 80010100402 (size L)
 L: 1900 x 728 x 350 mm / 23,5 kg
 M: 1740 x 728 x 350 mm / 21,5 kg
 XS: 740 x 728 x 350 mm / 11 kg

Material_1 (Shelf)
 compact plate, 10 mm, ceramic
 anthracite
 L: 1900 x 728 x 10 mm / 19 kg
 M: 1740 x 728 x 10 mm / 17 kg
 XS: 740 x 728 x 10 mm / 8 kg

Material_2 (U-Bolt)
 steel, powder-coated anthracite,
 system_80: 716 x 40 x 350 mm,
 weight: 1,5 kg

Special features
 any other decor is available
 (see page: 105, Option_5)

Individual
 other colors on request



connection between table and U-Bolt



shelf for STAGE_80/Size: M



shelf for STAGE_80/Size: XS



STAGE_80 / Size: L

**The Shelf-system is also
 available for the STAGE_50.**

MATERIAL+COLOR

basic

base: 100,101,102
 shelf: 401, 402

option

base: 103, 104, 105, 109
 shelf: 407, 409, 411, 414, 415, 416, 417, 418, 419

table on wheels

Buffet system in size „S“ = 2 x XS/length: 160 cm
usage of two different table-tops on one base frame



MATERIAL+COLOR

basic | **option**
base: 100,101,102 | base: 103, 104, 105, 106

Table also available in smaller depth of 50 cm:
base_STAGE_50_S/item-no.: 50019

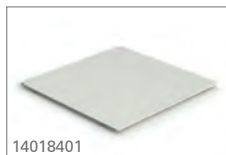


base_STAGE_80_S/item-no.: 80039

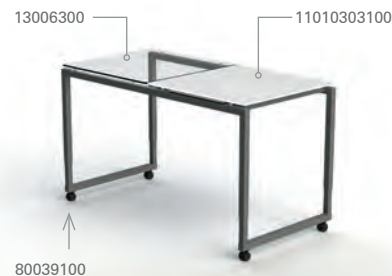
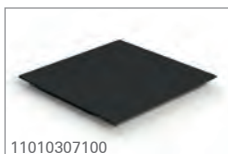


buffet island (160 x 160 cm)





combine your favorite table-tops



FRAME_180

Item No.: 25002100300

[LxWxH]: 1800 x 700 x 900 mm
weight: 54 kg

Base

steel, powder-coated anthracite
profile 30 x 30 mm, can be folded
weight: 18 kg

Table-top

safety glass 6 mm framed,
profile 30 x 30 mm
weight: 36 kg

Height options

750 mm/1050 mm

Individual

other colors on request

Square Version

Item No.: 25011100300

FRAME 70

700 x 700 x 900 mm



MATERIAL+COLOR

basic

base: 100,101,102
table-top: 300, 401, 402

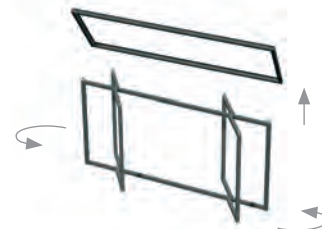
option

base: 103, 104, 105, 109
table-top: 303, 305, 307, 308, 309, 310, 311, 407, 409, 411, 414, 415, 416, 417, 418, 419

connection between table-top and base



folding-system



trolley for 5 x FRAME_180_steel



weight: 60 kg [empty]/330 kg [full]

SCAPE_180

Item No.: 24002100300

[LxWxH]: 1800 x 700 x 900 mm
weight: 51 kg

Base

steel, powder-coated anthracite
profile 30 x 30 mm, can be folded
weight: 16 kg

Table-top

safety glass 10 mm, rounded angle,
to be fixed to the base,
weight: 35 kg

Height options

750 mm/1050 mm

Individual

other colors on request

Square version

Item No.: 24011100300

SCAPE_70

700 x 700 x 900 mm



MATERIAL+COLOR

basic

base: 100, 101, 102

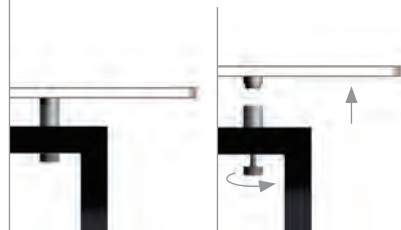
table-top: 300, 401, 402

option

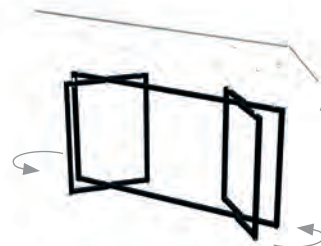
base: 103, 104, 105, 109

table-top: 303, 305, 307, 308, 309, 310, 311, 407, 409, 411, 414, 415, 416, 417, 418, 419

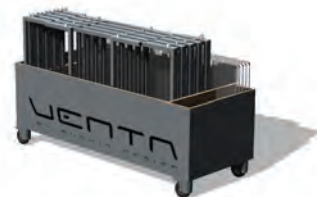
connection between table-top and base



folding-system



trolley for 5 x SCAPE_180



weight: 62 kg [empty]/317 kg [full]

LEVEL_150 (set of 3)

Item No.: 26001100300

LEVEL_150

[LxWxH]: 1500 x 750 x 850 mm
weight: 34 kg

Base

steel, powder-coated anthracite
profile 30 x 30 mm, can be folded
weight: 12 kg

Table-top

safety glass 10 mm,
to be fixed to the base,
weight: 22 kg

LEVEL_ETAGERE_100

[LxWxH]: 1000 x 500 x 260 mm
weight: 11,1 kg

Feet

stainless steel, matt abraded
weight: 3 x 0,7 kg

Table-top

safety glass 10 mm,
bolted with the feet,
weight: 9 kg

LEVEL_ETAGERE_60

[LxWxH]: 600 x 300 x 200 mm
weight: 5,5 kg

Feet

stainless steel, matt abraded
weight: 3 x 0,5 kg

Table-top

safety glass 10 mm,
bolted with the feet,
weight: 4 kg



MATERIAL+COLOR

basic

base: 100,101,102

table-top: 300, 401, 402

option

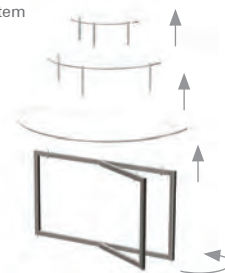
base: 103, 104, 105, 109

table-top: 303, 305, 307, 308, 309, 310, 311, 407, 409, 411, 414, 415, 416, 417, 418, 419

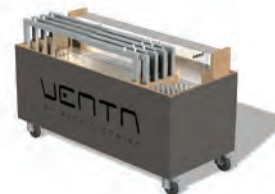
connection between table-top and feet



folding-system



trolley for 4 x LEVEL_150



weight: 67 kg [empty]/269 kg [full]

QUAD_230 (set of 2)

Item No.: 28001100300

QUAD_230

[LxWxH]: 1600 x 700 x 900 mm
weight: 32 kg

Base

steel, powder-coated anthracite
profile 30 x 30 mm, not foldable
weight: 10 kg

Table-top

safety glass 10 mm,
to be fixed to the base,
weight: 22 kg

QUAD_ETAGERE_80

[LxWxH]: 1100 x 350 x 260 mm
weight: 10,6 kg

Feet

stainless steel, matt abraded
weight: 3 x 0,7 kg

Table-top

safety glass 10 mm,
bolted with the feet,
weight: 8,5 kg

The „ALL-ROUNDER“
placed in a circle, around a
column or in combination
with the SCAPE-model.



MATERIAL+COLOR

basic

base: 100, 101, 102

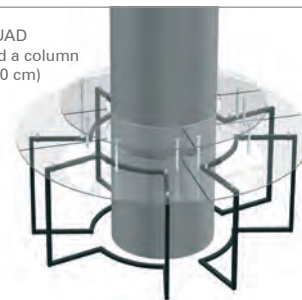
table-top: 300, 401, 402

option

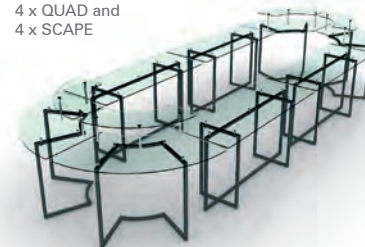
base: 103, 104, 105, 109

table-top: 303, 305, 307, 308, 309, 310, 311, 407, 409, 411, 414, 415, 416, 417, 418, 419

4 x QUAD
around a column
($\phi=230$ cm)



compilation of
4 x QUAD and
4 x SCAPE



trolley for 4 x QUAD



weight: 65 kg [empty]/235 kg [full]

STAGE_ETAGERE (set of 4)

Item No.: 32001100300

L: 750 x 400 x 280 mm

M: 700 x 360 x 255 mm

XS: 320 x 320 x 230 mm (two pieces)

total weight: 18,5 kg

Base

steel, powder-coated anthracite

profile 30 x 30 mm, can be folded

weight: 1,4 kg/1,3 kg/2 x 0,6 kg

Table-top

safety glass 6 mm,

weight: 4,4 kg/3,7 kg/2 x 1,5 kg

Individual

other colors on request

front view



side view



top view



set of four pieces



stackable for storage



MATERIAL+COLOR

basic

base: 100,101,102

table-top: 300, 401, 402

option

base: 103, 104, 105, 109

table-top: 303, 305, 307, 308, 309, 310, 311, 407, 409, 411, 414, 415, 416, 417, 418, 419



Radicchio

Quinta Tonnara

Prosciutto Cotto

Insalata di Rucola

STAGE_Etagere_COOL

Item No.: 32005100303

[LxWxH]: 400 x 400 x 150 mm
weight: 7 kg

Base

steel, powder-coated anthracite
profile 15 x 15 mm
weight: 7 kg

Table-Top

safety glass 6 mm, white glass,
underside white colored,
weight: 2,2 kg

Bowl (for COOL-plates)

steel, 1 mm, bended, powder-coated
weight: 1,5 kg

COOL-Plate

350 x 350 x 25 mm
polystyrol, black
weight: 2,4 kg

Individual

other colors on request

2h cooling
5°-10°C
on the glass surface
without electricity

**MATERIAL+COLOR****basic**

base: 100,101,102
table-top: 303, 307

option

base: 103, 104, 105, 109
table-top: 308, 309, 310, 311

Cool-plate
350 x 350 x 25 mm
weight: 2,4 kg



explosion view/main parts



rectangular model

item no. 32006

850 x 420 x 200 mm / weight: 14 kg





TABLE + STOOL





Neue Nationalgalerie, Berlin | GERMANY

Our exclusively designed cocktail tables can be folded up and can be assembled and disassembled in just a few easy steps, without the need for any tools.

A trolley system enables the furniture to be transported and stored in the smallest spaces. All of our furniture is mobile, can be folded up and can be used anywhere.

Maximum flexibility. Our cocktail table – always the focal point with its stylish design.

Our cocktail table is perfectly designed down to the smallest detail. It has a unique combination of design and functionality. The tables are simply elegantly designed. It comes as a surprise to many that this is a folding table, which can be stored in the smallest spaces.



BASIC:
base frame: 100, 101, 102

OPTION:
base frame: 103, 104, 105, 109



Item No.: 23001100300300

SET_70 / material + colors



SET_70

Item No.: 23001100300300

[LxWxH]: 700 x 700 x 1050 mm
weight: 18,5 kg

Base

steel, powder-coated anthracite
profile 30 x 30 mm, can be folded
weight: 7 kg

Table-top

safety glass 10 mm, $\phi = 700$ mm,
to be fixed to the base,
weight: 10 kg

Lower-tray

safety glass 4 mm, $\phi = 425$ mm,
weight: 1,5 kg



MATERIAL+COLOR

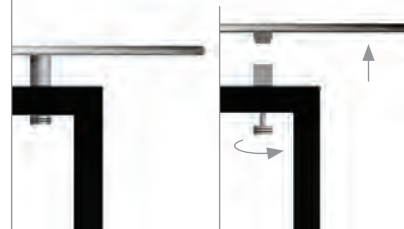
basic

base: 100, 101, 102
table-top/lower-tray:
300, 401, 402

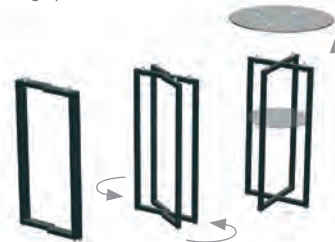
option

base: 103, 104, 105, 109
table-top/lower-tray: 303, 305, 307, 308, 309, 310, 311,
407, 409, 411, 414, 415, 416, 417, 418, 419

connection between table-top and base



folding-system



trolley for 10 x cocktail-table_SET_70



weight: 35 kg [empty]/210 kg [full]

SET_65

Item No.: 23004100300300

[LxWxH]: 650 x 650 x 1050 mm
weight: 18,6 kg

Base

steel, powder-coated anthracite
profile 30 x 30 mm, can be folded
weight: 7 kg

Table-top

safety glass 10 mm, 650 x 650 mm,
to be fixed to the base,
weight: 10 kg

Lower-tray

safety glass 4 mm, 425 x 425 mm,
weight: 1,6 kg



MATERIAL+COLOR

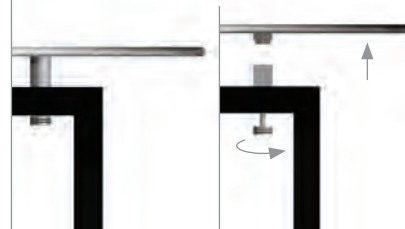
basic

base: 100, 101, 102
table-top/lower-tray:
300, 401, 402

option

base: 103, 104, 105, 109
table-top/lower-tray: 303, 305, 307, 308, 309, 310, 311,
407, 409, 411, 414, 415, 416, 417, 418, 419

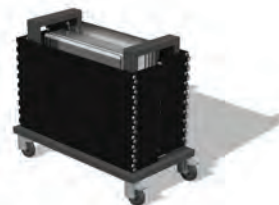
connection between table-top and base



folding-system



trolley for 10 x cocktail-table_SET_65



weight: 35 kg [empty]/211 kg [full]

CUBE_66

Item No.: 31002100601

[LxWxH]: 565 x 665 x 800 mm
weight: 8 kg

Base

steel, powder-coated anthracite
profile 15 x 15 mm, can be stacked
weight: 4 kg

Seat

artificial leather, black
weight: 1,0 kg

Individual

other colors on request



MATERIAL+COLOR

basic

base: 100,101,102
seat: 600, 601

option

base: 103, 104, 105, 109
seat: 604

side view



front view



arrangement of 3 x chair



stackable



PLATE_37

Item No.: 31001100280

[LxWxH]: 390 x 410 x 865 mm

seat-height: 765 mm

weight: 4,5 kg

Base

steel, powder-coated anthracite

profile 15 x 15 mm

weight: 3,5 kg

Seat

plywood 10 mm, bent, black

weight: 1,0 kg

Individual

other colors on request



MATERIAL+COLOR

basic

base: 100,101,102

seat: 279, 280

option

base: 103, 104, 105, 109

seat: 281

side view



back view



arrangement (3 x Stool_PLATE_37_WHITE)



trolley for 10 x Stool_PLATE_37



weight: 16 kg [empty]/61 kg [full]

BY_70

Item No.: 27001100300

[LxWxH]: 700 x 700 x 630 mm
weight: 16 kg

Base

steel, powder-coated anthracite
profile 30 x 30 mm, can be folded,
frame-measures: 490 x 490 x 580 mm
weight: 6 kg

Table-top

safety glass 10 mm, \varnothing = 700 mm,
to be fixed to the base,
weight: 10 kg

Individual

other colors on request



MATERIAL+COLOR

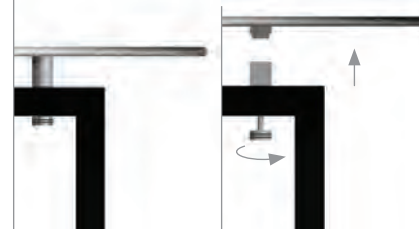
basic

base: 100, 101, 102
table-top: 300, 401, 402

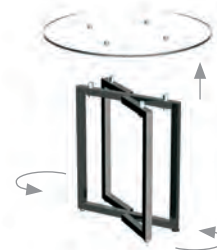
option

base: 103, 104, 105, 109
table-top: 303, 305, 307, 308, 309, 310, 311, 407, 409, 411, 414, 415, 416, 417, 418, 419

connection between table-top and base



folding-system



trolley for 5 x side-table_BY_70



weight: 40 kg [empty]/120 kg [full]

Item No. : 27004100300

[LxWxH]: 450 x 450 x 610 mm
weight: 10 kg

Base

steel, powder-coated anthracite
profile 30 x 30 mm, can be folded,
frame-measures: 490 x 490 x 560 mm
weight: 5 kg

Table-top

safety glass 10 mm, 450 x 450 mm,
to be fixed to the base,
weight: 5 kg

Individual

other colors on request

Special FEATURE

**Table-top as small
as the width of the
metal frame to fit
in the trolley.
(inside of the frame)**



MATERIAL+COLOR

basic

base: 100, 101, 102

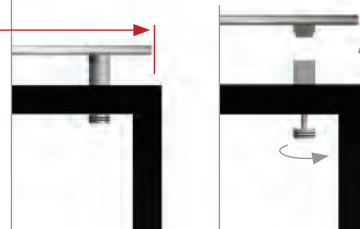
table-top: 300, 401, 402

option

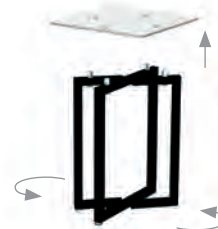
base: 103, 104, 105, 109

table-top: 303, 305, 307, 308, 309, 310, 311, 407, 409, 411, 414, 415, 416, 417, 418, 419

connection between table-top and base



folding-system



trolley for 10 x side-table_BY_45



weight: 20 kg [empty]/120 kg [full]

LECTERN

exchangeable front display or LCD-monitor



LECTERN_3G

Item No.: 35001

[LxWxH]: 500 x 600 x 1200 mm
weight: 30 kg

Body

acrylic glass, color: anthracite

Front-Board

acrylic glass, transparent,
600 x 1090 mm

Base

metal plate, 2 mm,
color: anthracite, powder-coated

delivery version:
black front cover
(exchangeable)

Features:

exchangeable front for printings
LED reading lamp
preparation for microphone
soft cover for transport and storage
rollerskate

all electrical properties use standard
power supply of 230V/50Hz
plug: schuko (CEE 7/4)



front view



height: 120 cm



cable inlet under
the metal plate

LECTERN_3GS_MONITOR

Item No. : 35003

[LxWxH]: 550 x 860 x 1200 mm

weight: 53,7 kg

Body

acrylic glass, color: anthracite

Front-Board

safety glass, backside black colored,
600 x 1090 mm

top-shelf (860 x 490 mm)

acrylic glass, color: white satined,
integrated box to storage the cables
of a laptop

Base

metal plate, 2 mm,
color: anthracite, powder-coated

your logo
(hotel or brand name)

Features:

LCD front monitor
LED reading lamp
preparation for microphone
soft cover for transport and storage
rollerskate

all electrical properties use standard
power supply of 230V/50Hz
plug: schuko (CEE 7/4)



NEW
18" wide screen
monitor to present
your LOGO

front view

height: 120 cm



FEATURES

Features of VENTA products

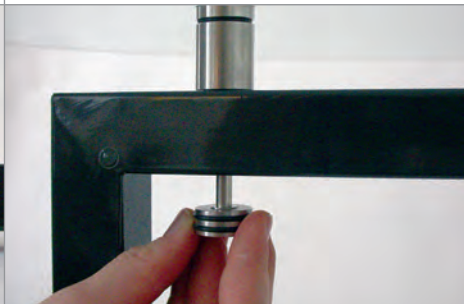
feet-adjustment

The cocktail-tables have three feet which are fixed. The fourth foot is adjustable. You can use your own foot to adjust easily the stability.



glass-top mounting

The cocktail-tables and most of the buffet-tables have a special feature to fix the glass-top to the base. The screw is mounted undetachable on the base.



glass-top quality

All glass-tops are produced as safety glass. In case of damage, they will break into small pieces to avoid any injury.



trolleys for storage

For almost all VENTA products we offer trolleys to store the goods. You can store ten cocktail-tables in a trolley in less than 0,6m².



foldable furniture

Nearly all VENTA products are foldable.



stackable furniture

The stools can be stacked up to ten pieces.





VENTA
BY BÜCHER DESIGN

All VENTA furniture has special features that make our exclusive products distinctive and unique. Each individual product was designed as a foldable, stackable or modular system, so our high-quality furniture can always be securely stored, taking up very little space.

A matching trolley system is available for all VENTA furniture items, where the table parts can be stacked individually and secured in place against one another.

All VENTA furniture is put together without the use of any tools and there are no parts that can get lost. The connecting elements between the table frame and table-top are always made of stainless steel and are produced using high-precision lathes. The consistent quality of our products is ensured through regular physical controls.

VENTA products are designed as foldable, stackable or modular systems, enabling our furniture to be stored securely and using very little space. We also offer additional equipment for many VENTA products to make them even more simple and convenient to manage. All foldable tables can be equipped with rollerskates, for example. This enables the buffet tables to be moved around the room quickly and easily without having to carry them or take them apart and put them together again.

EQUIPMENT

additional items for our range



HEATBRIDGE_BARTSCHER

Item No.: 66004100

[LxWxH]: 1840 x 350 x 420 mm
weight: 9 kg

Base (feet)

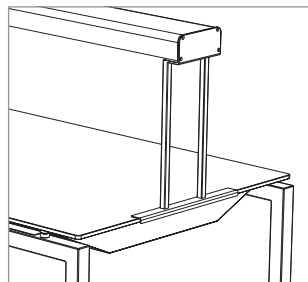
steel, powder-coated anthracite
profile 15 x 15 mm

heating element (infrared technic)

Bartscher (manufacturer)
model: 114.006
power: 1,73 kW / 230V
color/material: silver, satinated
aluminium

Individual

different colors available
(only for the base)



special feet - perfect
connection to the table

front view



side view



underside view:
infrared heat technic



**additional item to keep the food warm
(in combination with the induction table)**

MATERIAL+COLOR

basic

base: 100,101,102

option

base: 103, 104, 105, 109

combination with STAGE table



HEATBRIDGE_BEER

Item No.: 66002100

[LxWxH]: 1788 x 425 x 400 mm
weight: 20 kg

Base (feet)

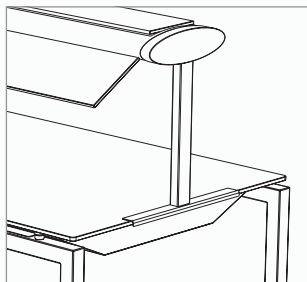
steel, powder-coated anthracite
profile 50 x 25 mm

heating element (infrared technic)

Beer (manufacturer)
model: SOLARIS
power: 5 x 300 W / 230V
color/material: steel, powder-coated anthracite

Individual

different colors available



special feet - perfect connection to the table



**additional item to keep the food warm
(in combination with the induction table)**

MATERIAL+COLOR

basic

base: 100,101,102

option

base: 103, 104, 105, 109

front view



side view



underside view:
infrared heat technic + cold light



combination with STAGE table

FRONT/SIDEBLIND_STAGE_BAMBOO

NEW

FRONTBLIND_STAGE_L_BAMBOO

Item No.: 38029

[LxWxH]: 1960 x 822 x 17 mm

weight: 13 kg

FRONTBLIND_STAGE_M_BAMBOO

Item No.: 38030

[LxWxH]: 1800 x 822 x 17 mm

weight: 12 kg

FRONTBLIND_STAGE_XS_BAMBOO

Item No.: 38033

[LxWxH]: 800 x 822 x 17 mm

weight: 6 kg

special table/size = 2 x XS

FRONTBLIND_STAGE_S_BAMBOO

Item No.: 38032

[LxWxH]: 1600 x 822 x 17 mm

weight: 7,5 kg

SIDEBLIND_STAGE_80_BAMBOO

Item No.: 38034

[LxWxH]: 800 x 822 x 17 mm

weight: 6 kg

SIDEBLIND_STAGE_50_BAMBOO

Item No.: 38035

[LxWxH]: 500 x 822 x 17 mm

weight: 4,5 kg

**SIDEBLINDS/available in
two sizes for 50 and 80 system**

material

2 mm, steel, laser cut, powder-coated

decoration and cover element for STAGE tables

FRONT suitable for 50 and 80 system/table height = 92 cm

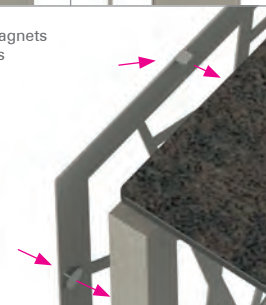


side view 1

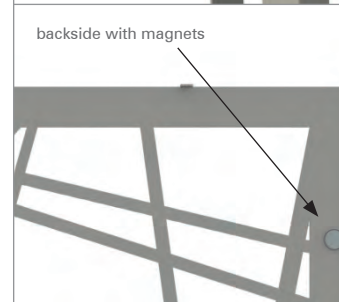
side view 2



mounting by magnets
and small hooks



backside with magnets



FRONT/SIDEBLIND_STAGE_BAMBOO_COVERED

FRONTBLIND_STAGE_L_BAMBOO_C.

Item No.: 38036

[LxWxH]: 1960 x 822 x 17 mm

weight: 14 kg

FRONTBLIND_STAGE_M_BAMBOO_C.

Item No.: 38037

[LxWxH]: 1800 x 822 x 17 mm

weight: 13 kg

FRONTBLIND_STAGE_XS_BAMBOO_C.

Item No.: 38040

[LxWxH]: 800 x 822 x 17 mm

weight: 6,5 kg

special table/size = 2 x XS

FRONTBLIND_STAGE_S_BAMBOO_C.

Item No.: 38039

[LxWxH]: 1600 x 822 x 17 mm

weight: 8 kg

SIDEBLIND_STAGE_80_BAMBOO_C.

Item No.: 38041

[LxWxH]: 800 x 822 x 17 mm

weight: 6,5 kg

SIDEBLIND_STAGE_50_BAMBOO_C.

Item No.: 38042

[LxWxH]: 500 x 822 x 17 mm

weight: 5 kg

**SIDEBLINDS/available in
two sizes for 50 and 80 system**



material

2 mm, steel, laser cut, powder-coated
and additional cover with polyester or forex

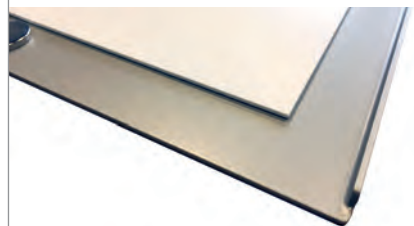
decoration and cover element for STAGE tables

FRONT suitable for 50 and 80 system/table height = 92 cm

backside with polyester
(white, translucent, removable)



backside with forex
(white, fixed=not removable)



backside with magnets and fixed cover (forex)



FRONT/SIDEBLIND_STAGE_LEAF

NEW

FRONTBLIND_STAGE_L_LEAF

Item No.: 38015

[LxWxH]: 1960 x 822 x 17 mm

weight: 13 kg

FRONTBLIND_STAGE_M_LEAF

Item No.: 38016

[LxWxH]: 1800 x 822 x 17 mm

weight: 12 kg

FRONTBLIND_STAGE_XS_LEAF

Item No.: 38019

[LxWxH]: 800 x 822 x 17 mm

weight: 6 kg

special table/size = 2 x XS

FRONTBLIND_STAGE_S_LEAF

Item No.: 38018

[LxWxH]: 1600 x 822 x 17 mm

weight: 7,5 kg

SIDEBLIND_STAGE_80_LEAF

Item No.: 38020

[LxWxH]: 800 x 822 x 17 mm

weight: 6 kg

SIDEBLIND_STAGE_50_LEAF

Item No.: 38021

[LxWxH]: 500 x 822 x 17 mm

weight: 4,5 kg

**SIDEBLINDS/available in
two sizes for 50 and 80 system**

material

2 mm, steel, laser cut, powder-coated

decoration and cover element for STAGE tables

FRONT suitable for 50 and 80 system/table height = 92 cm

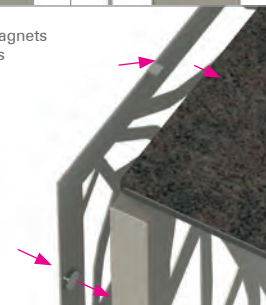


side view 1

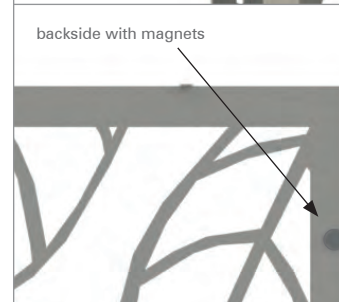
side view 2



mounting by magnets
and small hooks



backside with magnets



FRONT/SIDEBLIND_STAGE_LEAF_COVERED

FRONTBLIND_STAGE_L_LEAF_COV.

Item No.: 38022

[LxWxH]: 1960 x 822 x 17 mm

weight: 14 kg

FRONTBLIND_STAGE_M_LEAF_COV.

Item No.: 38023

[LxWxH]: 1800 x 822 x 17 mm

weight: 13 kg

FRONTBLIND_STAGE_XS_LEAF_COV.

Item No.: 38026

[LxWxH]: 800 x 822 x 17 mm

weight: 6,5 kg

special table/size = 2 x XS

FRONTBLIND_STAGE_S_LEAF_COV.

Item No.: 38025

[LxWxH]: 1600 x 822 x 17 mm

weight: 8 kg

SIDEBLIND_STAGE_80_LEAF_COV.

Item No.: 38027

[LxWxH]: 800 x 822 x 17 mm

weight: 6,5 kg

SIDEBLIND_STAGE_50_LEAF_COV.

Item No.: 38028

[LxWxH]: 500 x 822 x 17 mm

weight: 5 kg

**SIDEBLINDS/available in
two sizes for 50 and 80 system**



material

2 mm, steel, laser cut, powder-coated
and additional cover with polyester or forex

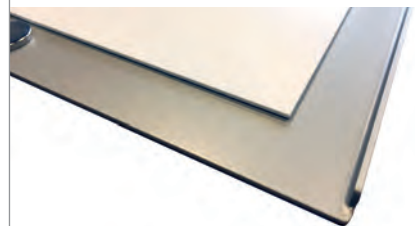
decoration and cover element for STAGE tables

FRONT suitable for 50 and 80 system/table height = 92 cm

backside with polyester
(white, translucent, removable)



backside with forex
(white, fixed=not removable)



backside with magnets and fixed cover (forex)



SHELF_FRAME_180

Item No.: 25040100402

[LxWxH]: 1136 x 700 x 371 mm
weight: 18 kg

Base

steel, 3 mm, bended, powder-coated
anthracite

Shelf

compact plate 10 mm,
decor: ceramic anthracite

Special features

any other decor is available
(see page: 105, Option_5)

Individual

other colors on request for U-Bolt



perfect system for storage
suitable for every table
model: FRAME_180

MATERIAL+COLOR

basic

base: 100,101,102
shelf: 401, 402

option

base: 103, 104, 105, 109
shelf: 407, 409, 411, 414, 415, 416, 417, 418, 419

front view



side view



explosion view



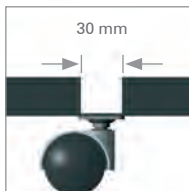
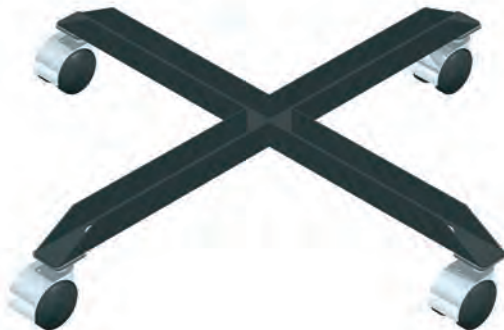
FRAME_180_INDUCION with SHELF



ROLLERSKATE

Rollerskates
for STEEL tables_SET / BY / SCAPE
Item No.: 66007100
(all tables with two foldable legs)

profile: 30 x 30 mm
[LxWxH]: 600 x 600 x 98 mm
weight: 2,4 kg
color: powder-coated anthracite



Rollerskates
for STEEL tables_FRAME_180
Item No.: 66005100
(table with four foldable legs)

profile: 30 x 30 mm
[LxWxH]: 600 x 320 x 98 mm
weight: 2,0 kg
color: powder-coated anthracite



Rollerskates
for STEEL table_SCAPE_180
Item No.: 66006100
(table with four foldable legs)

profile: 30 x 30 mm
[LxWxH]: 600 x 320 x 98 mm
weight: 2,0 kg
color: powder-coated anthracite

MATERIAL + COLOR

Büchin Design offers a wide range of materials and colors in three categories **BASIC**, **OPTION** and **CUSTOMIZED**.

Most of the VENTA products contain more than one material. If you choose one part of a model in the higher category, all the other materials and colors can also be taken in the higher category.

All VENTA items have a unique five-digit item-number.

example: 23001 for the Cocktail-Table_SET_70

To define the material+color of the model, just add the three-digit material code.

example: 23001 + 100 (base frame=anthracite) + 300 (table-top=glass, transparent) + 300 (lower-tray=glass, transparent).

table-top:
glass, transparent



BASIC

23001100300300

table-top:
glass, white colored



OPTION

23001100303303

table-top:
glass, gold colored

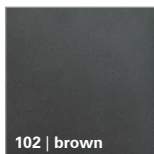


CUSTOMIZED

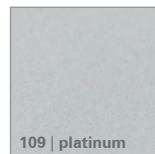
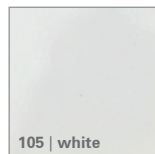
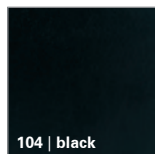
23001100318318

metal | color options

BASIC | three colors



OPTION | four colors

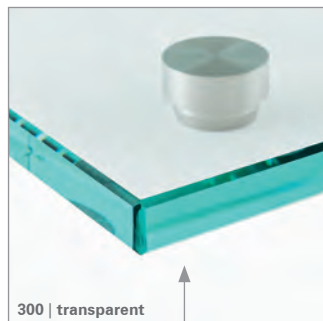


CUSTOMIZED | any color from RAL range transferred to IGP-range (same brightness and pigment as our other colors)

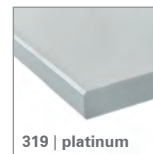


glass | color options

BASIC | only transparent glass (floatglass)



OPTION | eight colors



CUSTOMIZED | three special metal colors or any color from RAL range



compact panel | color options

BASIC | two decor options

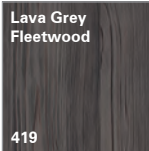
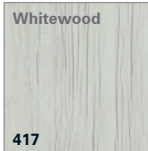
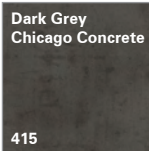
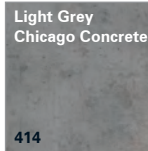
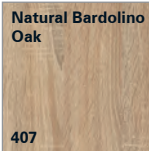


decor name

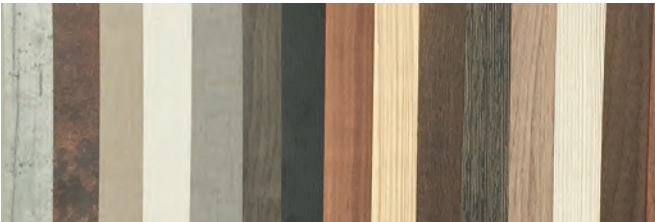
color-code



OPTION | nine decor options



CUSTOMIZED | any decor from EGGER-range which is available as compact panel (thickness of 10 mm, black core)



chipboard decor | color options

BASIC | two decor options

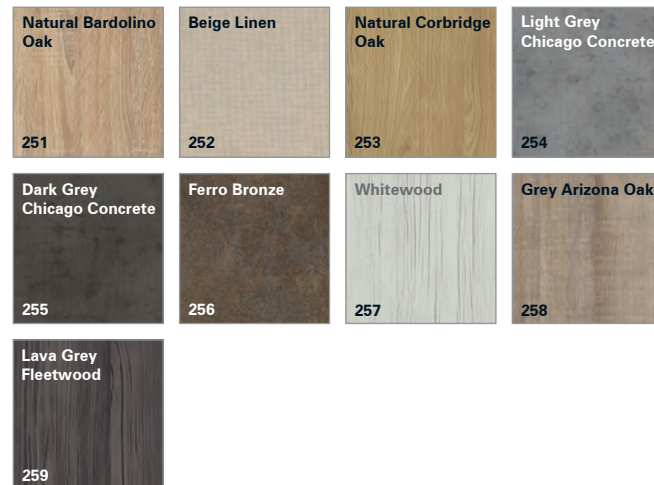


melamine-faced chipboard, 19 mm,
decor similar to HPL

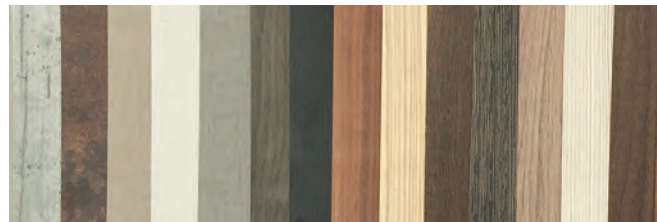
table-top material:
compact panel, 10 mm
(black core)



OPTION | nine decor options



CUSTOMIZED | any decor from EGGER-range which is available as HPL and possible to glue on a chipboard, 19 mm

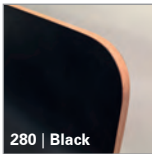


plywood with HPL | color options

BASIC | two decor options



279 | White



280 | Black

color-code



OPTION | one decor option



281 | Pebble-Grey

CUSTOMIZED | any decor from the range of Presswerk Mainleus GmbH which is available and can be glued on plywood, 10 mm (bended)



artificial leather | color options

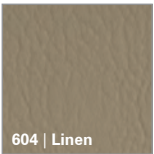
BASIC | two decor options



color-code



OPTION | one decor option

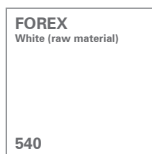
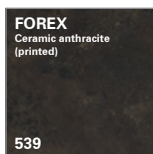


CUSTOMIZED | any color from Valencia-range (company: Spradling)

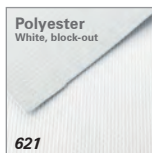


forex and polyester | color options

BASIC | five decor variations



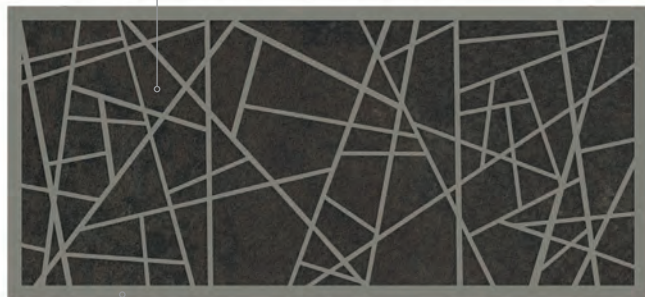
forex



polyester

cover on the back in polyester or forex

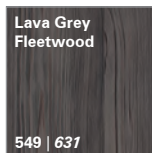
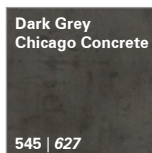
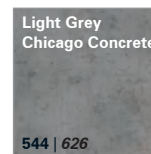
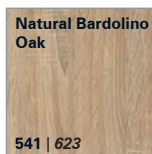
example: forex, ceramic anthracite printed, VENTA-Code: 539



metal part in IGP-color

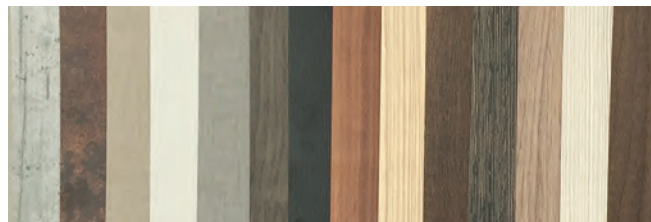
example: champagne, VENTA-Code: 101

OPTION | nine decor variations



forex | polyester

CUSTOMIZED | any decor from EGGER-range printed on fabric or forex material



CUSTOMIZED DECOR

example | „CIRCLE“ decor at the ceiling in a hotel lobby



detail view of the decor



decor transferred to the FRONTBLIND



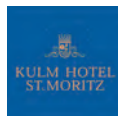
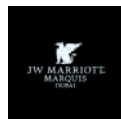
STAGE_80_M/Breakfast station

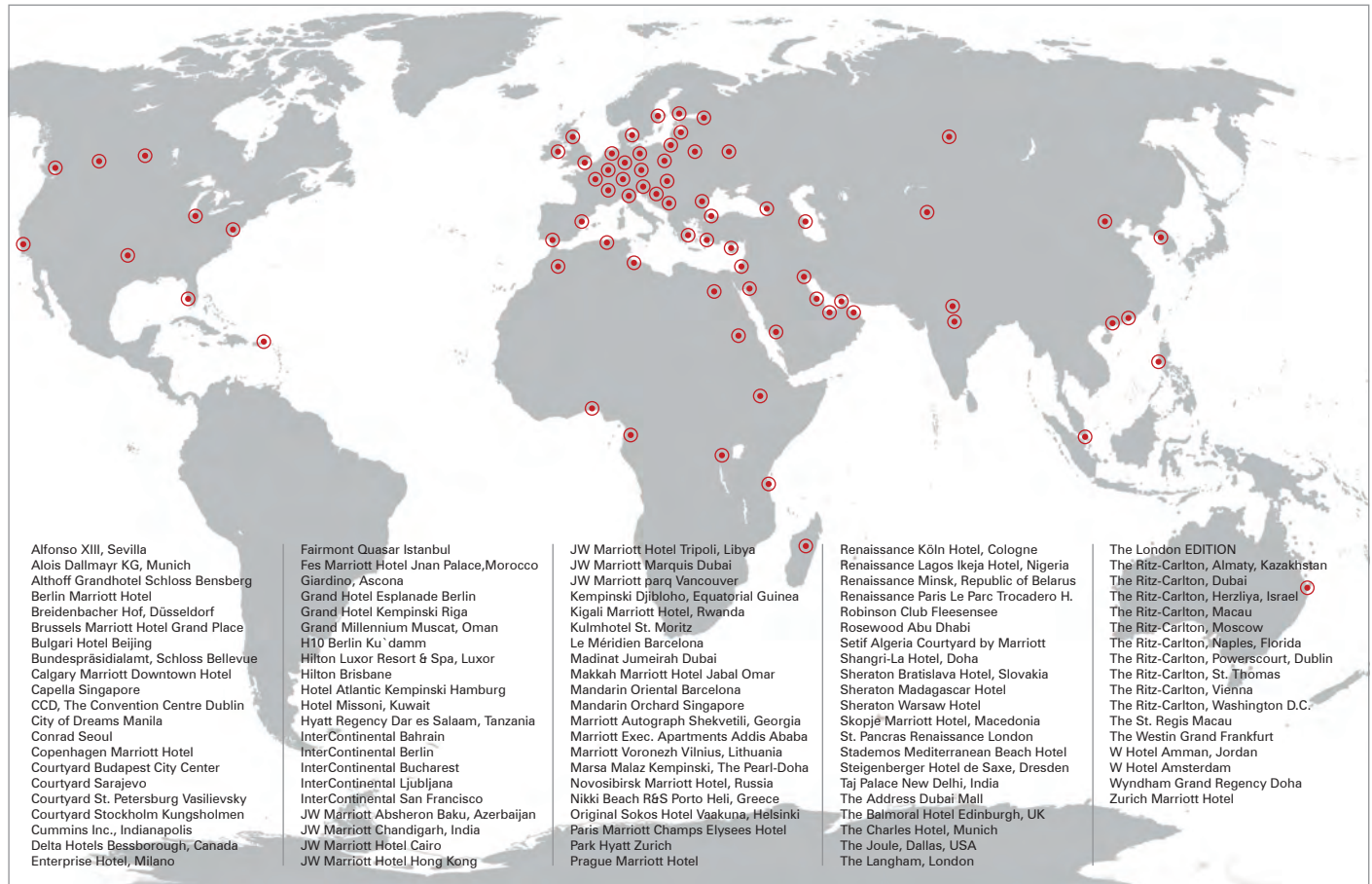




References

VENTA has designed exclusive furniture for the hotel, events and catering industry throughout the world. Our clients are based in a wide range of locations. You can find a selection of the hotels and locations fitted with our VENTA products in the references below as well as on our website www.ventadesign.com.





www.ventadesign.de

visit our showroom:

Büchin Design GmbH & Co. KG | Forckenbeckstr. 9-13 | 14199 Berlin / GERMANY | info@ventadesign.de | phone: +49-30-28045550 | Fax +49-30-2804555-28